

# 3D/Gore Application

Devin Walter



# Schematic

## Techniques Used:

- Application of Button w/ Spirit gum
- Creating bruising around eye
- Using Scar wax to create smile cuts
- Applying blood / Fresh Scab to smile cuts
- Embedding Needle + thread in Scar wax.



## Directions:

Apply basic Stage Makeup

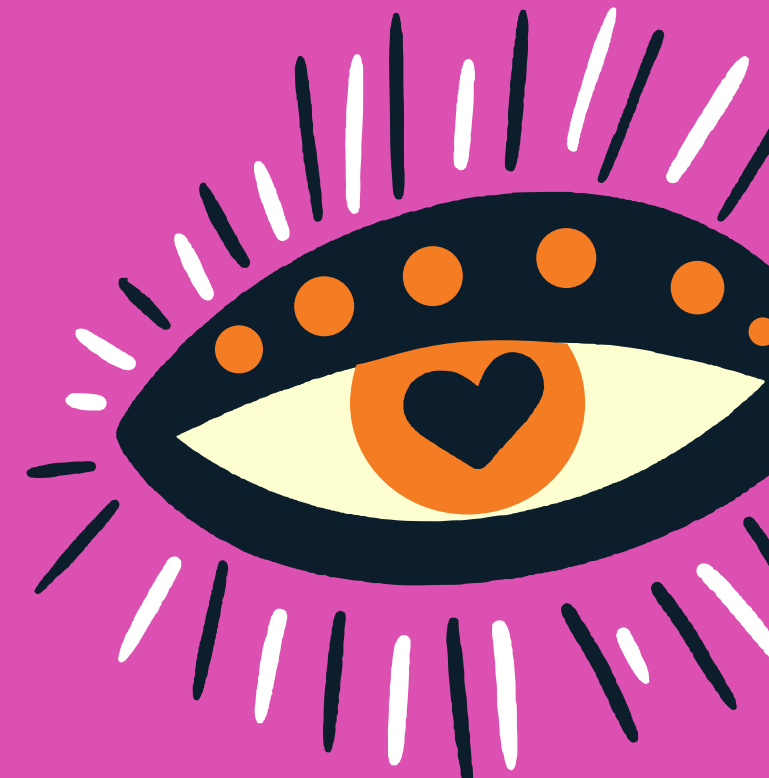
## Eye:

- Using Spirit gum apply to paper over the entire eye
- tear out center of tooth paper patch leaving edges jagged
- Create bloody / bruised effect around eye socket using bruise wheel
- apply button to eye area using spirit gum
- touch up eye area as needed

## Mouth Cuts:

- Create a Snake - like shape out of Scar wax + apply to corners of mouth
- Smooth out on edges (with shape) using 3 in 1 tool cut down center
- Use base color to match skin tone on both sides
- Use bruise wheel / fake blood create a fresh looking cut w/ irritation
- Use dull end of needle + create holes for thread / sutures
- Dip ends of thread in spirit gum + place in holes

Repeat on other side - but create a healed scar



# Final Application

WARNING: FAKE BLOOD, BRUISING, CUTS, & STITCHES





